

EXP-11.DWG

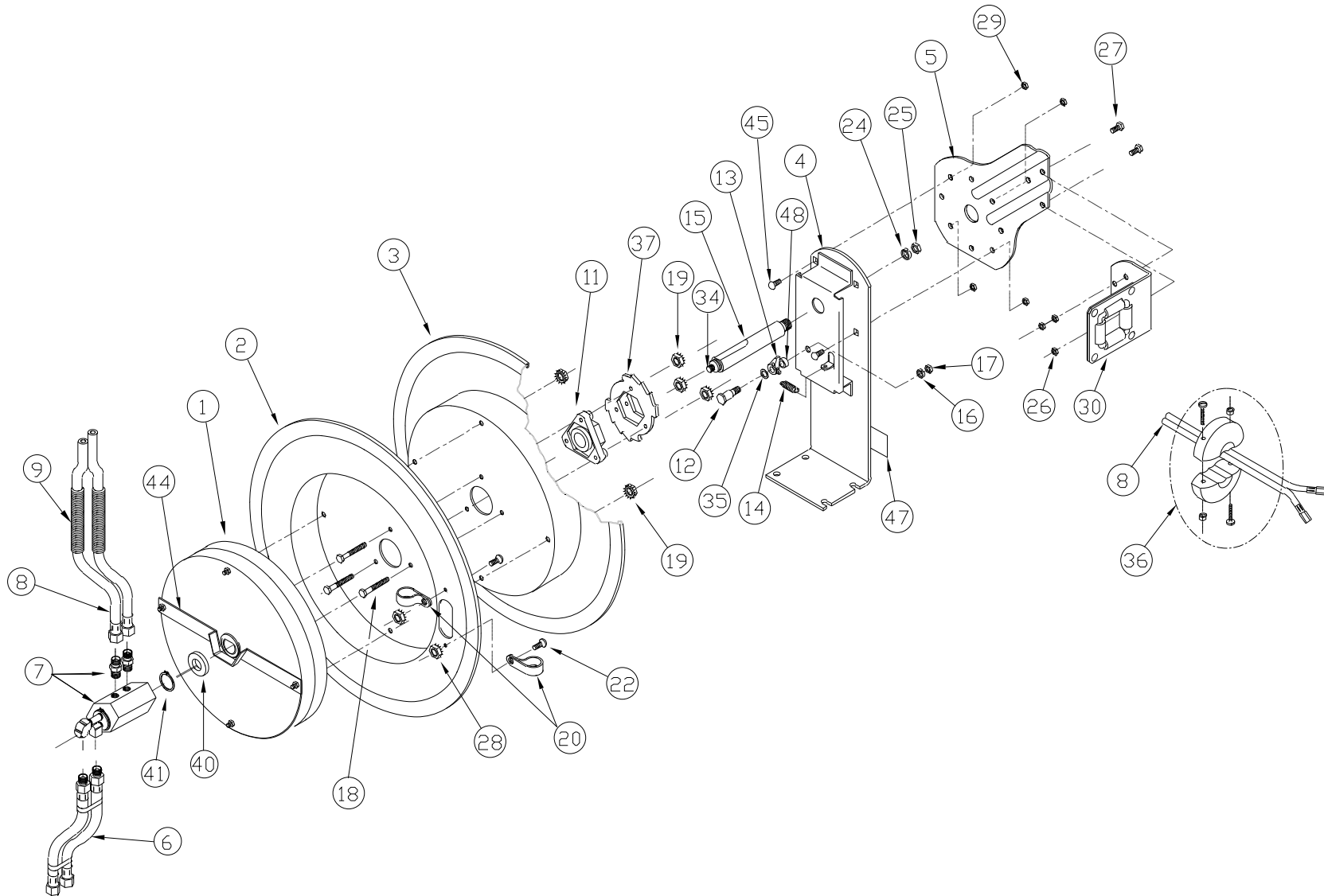
REVISION: R

ECO NO.: 1986-1

DRAWN BY: J KNOSALLA

DATE: 01/29/04

COXREELS
SERIES SHW



COMMON ON ALL SERIES SHW REELS

| DETAIL ITEM NO. | PART NO. | DESCRIPTION | SHW-N-150 | SHW-N-160 | SHW-N-175 | SHW-N-1100 |
|-----------------------|----------|---------------------------------------|-----------|-----------|-----------|------------|
| | | | QTY REQ'D | | | |
| 1 | 691-3 | SPRING CAN, 12" | 1 | | | |
| | 695-2 | SPRING CAN, 15" | | 1 | | |
| | 695-3 | SPRING CAN, 15" | | | 1 | |
| | 692-3 | SPRING CAN, 15" | | | | 1 |
| 2 | 1703 | DISC, 19"X 2.25"W, W/SLOT | 1 | | | |
| | 1705 | DISC, 24"X 2.25"W, W/SLOT | | 1 | 1 | 1 |
| 3 | 1702 | DISC, 19" X 2.25"W. | 1 | | | |
| | 1704 | DISC, 24" X 2.25"W. | | 1 | 1 | 1 |
| 4 | 1743-2 | BASE, 19" REEL | 1 | | | |
| | 1744-2 | BASE, 24" REEL | | 1 | 1 | 1 |
| 5 | 1732 | ARM, GUIDE, 19" REEL | 1 | | | |
| | 1733 | ARM, GUIDE, 24" REEL | | 1 | 1 | 1 |
| 6 | 5423-1.5 | HOSE-W, STD, ¼" X18" (ASSY) | 1 | 1 | 1 | 1 |
| 7 | 498 | SWIVEL, ¼" WELD REEL, VITON (ASSY) | 1 | 1 | 1 | 1 |
| * 8 | 5423-50 | HOSE-W, STD, ¼" X 50' (ASSY) | 1 | | | |
| | 5423-60 | HOSE-W, STD, ¼" X 60' (ASSY) | | 1 | | |
| | 5423-75 | HOSE-W, STD, ¼" X 75' (ASSY) | | | 1 | |
| | 5423-100 | HOSE-W, STD, ¼" X 100' (ASSY) | | | | 1 |
| * 9 | 237-1 | GUARD, HOSE, ¼"-3/8" | 2 | 2 | 2 | 2 |
| 11 | 1776-3 | BEARING, HUB, 1" ID | 1 | 1 | 1 | 1 |
| 12 | 1620 | BOLT, SHOULDER, 1/2" X 1-1/2" | 1 | 1 | 1 | 1 |
| 13 | 640-1-BR | LOCKING DOG, F7 REEL (SPARKLESS) | 1 | 1 | 1 | 1 |
| 14 | 274-1-SS | SPRING, TENSION, LOCKING DOG | 1 | 1 | 1 | 1 |
| 15 | 1793 | AXLE, 1" OD, 1" SPRING CAN | 1 | 1 | 1 | |
| | 1794 | AXLE, 1" OD, 1-1/2" SPRING CAN | | | | 1 |
| 16 | 437 | WASHER, LOCK, 3/8" | 1 | 1 | 1 | 1 |
| 17 | 184 | NUT, HEX, JAM, 3/8-16 | 1 | 1 | 1 | 1 |
| 18 | 1953 | BOLT, CARRIAGE, 1/4-20 X 1-1/2", GR 5 | 3 | 3 | 3 | 3 |
| 19 | 125 | NUT, KEPS, 1/4-20 | 7 | 7 | 7 | 7 |
| 20 | 382 | CLAMP, HOSE, #14 | 2 | 2 | 2 | 2 |
| 22 | 245 | SCREW, 10-32 X 3/8, TRUSS/PHP | 2 | 2 | 2 | 2 |
| 24 | 438 | WASHER, LOCK, 5/8" | 1 | 1 | 1 | 1 |
| 25 | 3584 | NUT, HEX, 5/8-11 | 1 | 1 | 1 | 1 |
| 26 | 111 | NUT, LOCK, 5/16-18 | 3 | 3 | 3 | 3 |
| 27 | 312 | BOLT, HEX, 5/16-18 X 3/4" | 3 | 3 | 3 | 3 |
| 28 | 130 | NUT, KEPS, 10-32 | 2 | 2 | 2 | 2 |
| 29 | 111-1 | NUT, LOCK, 5/16-18 (LOW PROFILE) | 4 | 4 | 4 | 4 |
| 30 | 1728-1 | ROLLER BRACKET, F7 REEL | 1 | 1 | | |
| | 1829-2 | ROLLER BRACKET, F7 REEL | | | 1 | 1 |
| 34 | 10235-SS | STUD, SS, 3/8-16 UNC-2A X 1 | 1 | 1 | 1 | 1 |
| 35 | 6441-1 | SPACER, WASHER, .050"W. | 1 | 1 | 1 | 1 |
| * 36 | 633 | ASSY, HOSE STOP, ¼" WELD | 1 | 1 | 1 | 1 |
| 37 | 1924 | LOCKING RING, F7 REEL | 1 | 1 | 1 | 1 |
| 40 | 1755-1 | WASHER, SPACER, HDPE, BLACK | 1 | 1 | 1 | 1 |
| 41 | 1753 | RETAINING RING, C (5160-75) | 1 | 1 | 1 | 1 |
| 44 | 1802 | BRACKET, 12" WELDING SWIVEL | 1 | | | |
| | 1803 | BRACKET, 15" WELDING SWIVEL | | 1 | 1 | 1 |
| 45 | 10220-75 | BOLT, CARRIAGE, 5/16-18 X 3/4", GR 5 | 4 | 4 | 4 | 4 |
| 47 | 10925-5 | NAMEPLATE, PRODUCT, STD DECAL | 1 | 1 | 1 | 1 |
| 48 | 6440-SS | SPACER, WASHER, .286"W., SS | 1 | 1 | 1 | 1 |

* ON "LESS HOSE" MODELS (SHWL-) EXCLUDE ITEMS #8, #9, AND #36.

* ON "T GRADE HOSE" MODELS (SHWT-) THE BASE HOSE PART NUMBER IS 5424-XX

REEL ASSEMBLY REPORTS:

R101 LOCKING RING PLACEMENT

R128 PACKAGING PROCEDURE

REVISION: R ECO: 1986-1 DATE: 1/29/04 NAME: J. KNOSALLA