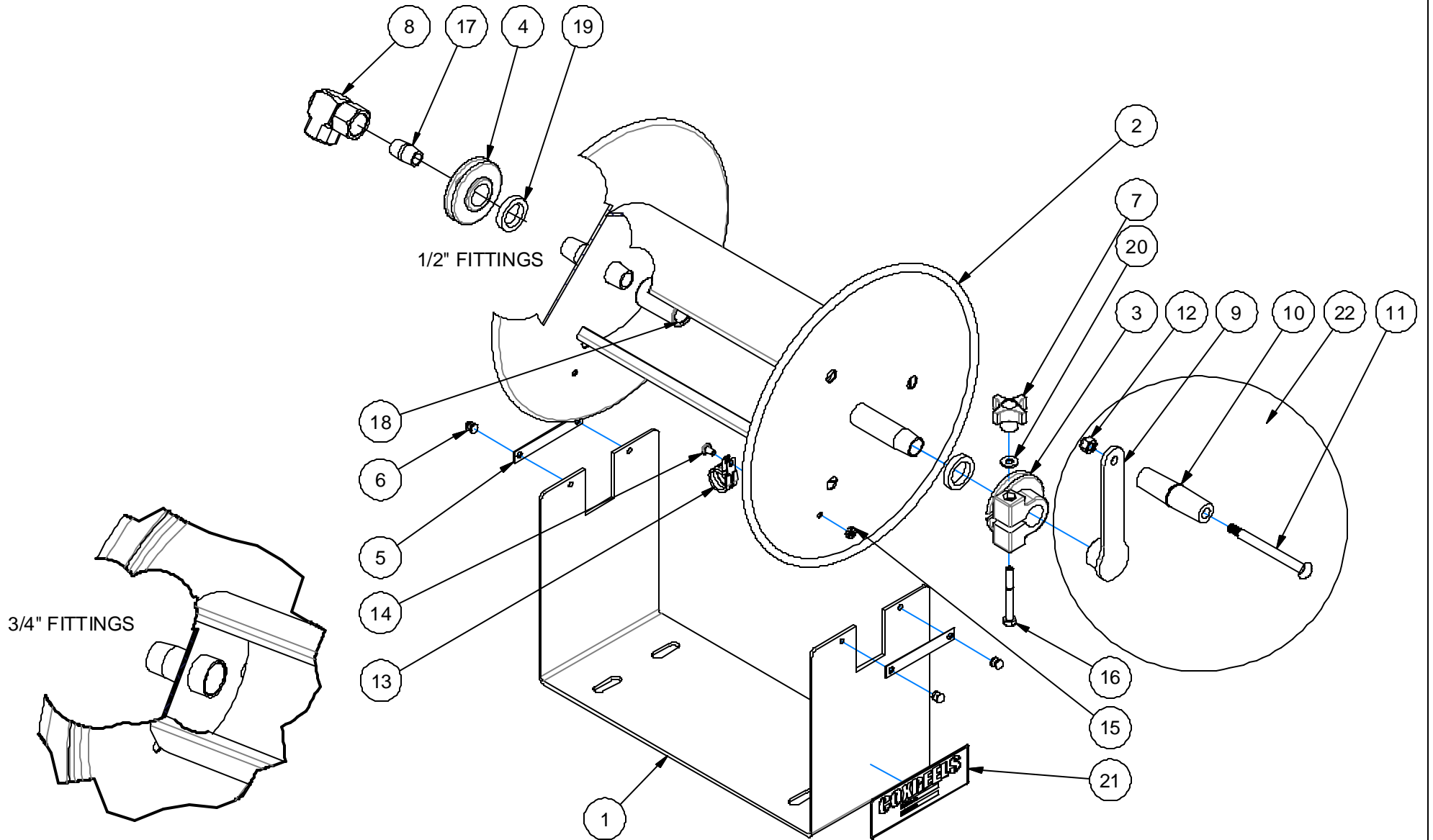


EXP-40SS

REVISION: E
ECO NO.: 1775-18
BY: J. KNOSALLA
DATE: 08/16/01

COXREELS

SERIES 112SS & 117SS



COMMON PARTS TO ALL STAINLESS STEEL CHALLENGER REELS

ASSY. ITEM NO.	DETAIL ITEM NO.	PART NO.	DESCRIPTION	112-4-75-SS	117-4-225-SS	117-5-100-SS
	1	6304-1-12.5-SS	FRAME, "U", CHALLENGER, SS	1	*	*
		6304-2-12.5-SS	FRAME, "U", CHALLENGER, SS	*	1	1
	2	7108-1-12.5-SS	DRUM ASSY, 1/2" NPT, 5.5" X 12.5"W	1	*	*
		7108-2-12.5-SS	DRUM ASSY, 1/2" NPT, 5.5" X 12.5"W	*	1	*
		7108-5-12.5-SS	DRUM ASSY, 3/4" NPT, 5.5" X 12.5"W	*	*	1
	3	6329-1-1	BEARING, EPDM, .877" ID, CRANK SIDE	1	1	1
	4	6328-1-1	BEARING, EPDM, .877" ID, SWIVEL SIDE	1	1	*
		6328-1-2	BEARING, EPDM, 1.058" ID, SWIVEL SIDE	*	*	1
	5	15711-1-SS	PLATE, KEEPER, BEARING	2	2	2
	6	3037-SS	RIVET, POP, #64,SS	4	4	4
	7	15719	KNOB, BLACK, PHENOLIC	1	1	1
	8	434-SS	SWIVEL, 1/2" NPT, CARBOXYLATED, SS	1	1	*
		426-SS	SWIVEL, 3/4" NPT, CARBOXYLATED, SS	*	*	1
22		7272-1-SS	CRANK, HAND, ASSEMBLY	1	1	1
	9	7107-SS	CRANK, HAND	1	1	1
	10	6333	HANDLE, CRANK, PLASTIC	1	1	1
	11	1621-SS	BOLT, SHOULDER, 5/16-18	1	1	1
	12	111-1-SS	NUT, LOCK, 5/16-18 (LOW PROFILE)	1	1	1
	13	383	HOSE CLAMP, #12	1	1	*
		384	HOSE CLAMP, #18	*	*	1
	14	245-SS	SCREW, TRUSS HD, 10-32 X 3/8", SS	1	1	1
	15	130-SS	NUT, KEPS, 10-32, SS	1	1	1
	16	7146-SS	BOLT, HEX, 1/4-20 X 2-1/4", SS	1	1	1
	18	7116-SS	COUPLING, AXLE, PLUMBING, 1/2-14	1**	1**	*
	19	7145	SPACER, PLASTIC	2	2	1
	20	688-SS	WASHER, FLAT, 1/4-20 UNC SS	1	1	1
21	10925-5	NAMEPLATE, PRODUCT, STD DECAL	1	1	1	

**SHOWN FOR REFERENCE ONLY. INCLUDED WITH DRUM ASSEMBLY.

REVISION: E

ECO: 1775-18

DATE: 08/16/01

NAME: J. KNOSALLA