

EXP-60SS.DWG

REVISION: R

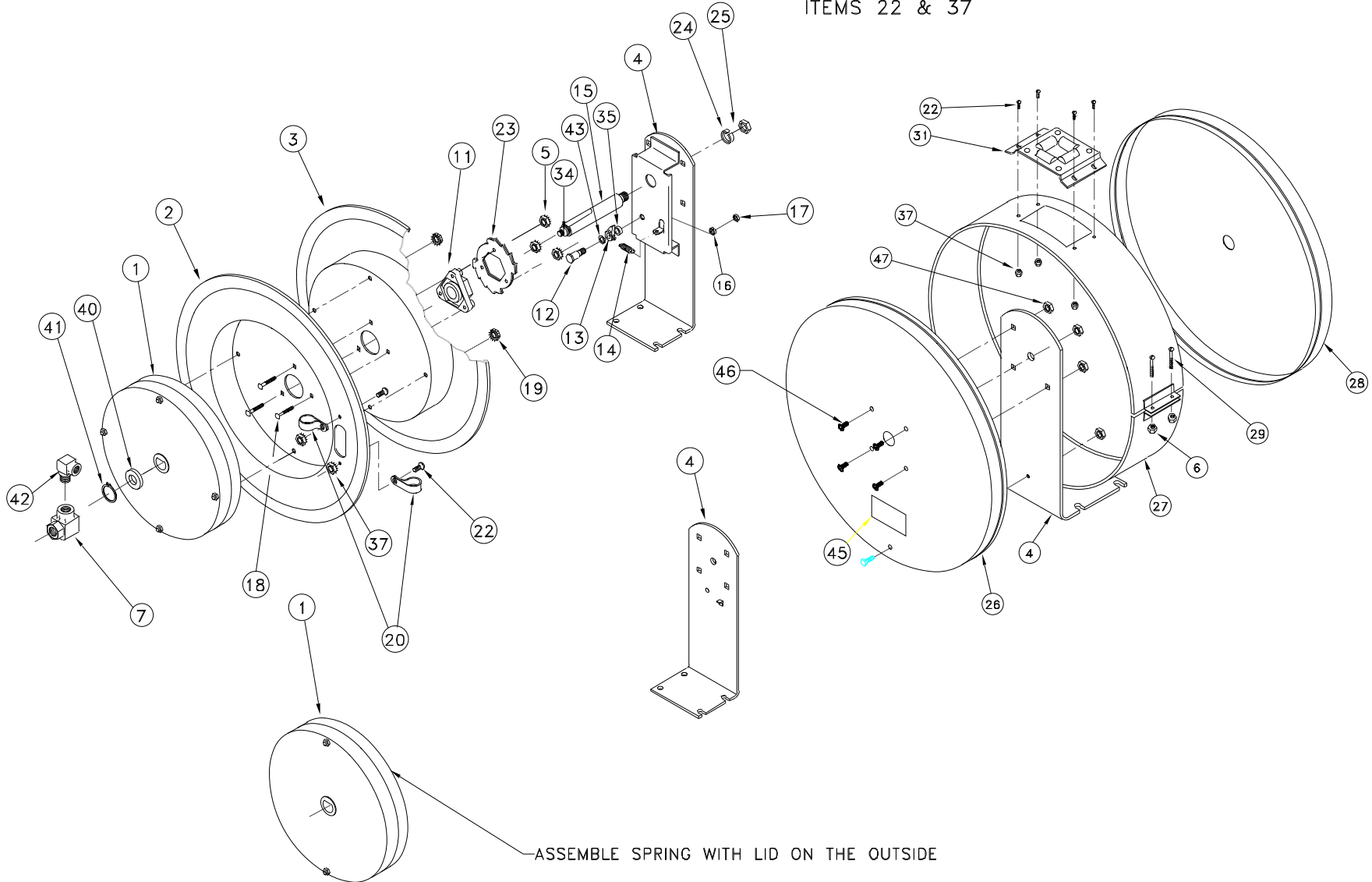
ECO NO.: 1924-5

DRAWN BY: J. KNOSALLA

DATE: 7/07/03

COXREELS
SERIES EN
STAINLESS STEEL

④ CENTER BAND KIT WITH HOSE
GUIDE INCLUDES ITEMS 27 &
31 WITH QTY. (4) EA. OF
ITEMS 22 & 37



COMMON PARTS TO ALL SERIES EN
STAINLESS STEEL REELS

DETAIL ITEM NO.	PART NO.	DESCRIPTION	ENL-N-335-SS	ENL-N-350-SS	ENL-N-425-SS	ENL-N-450-SS	ENML-N-335-SS	ENML-N-350-SS	ENML-N-425-SS	ENML-N-450-SS
1	689-3-SP	SPRING CAN, 10", SS	1	*	*	*	*	*	*	*
	690-2-SP	SPRING CAN, 12", SS	*	1	*	*	*	*	*	*
	691-3-SP	SPRING CAN, 12", SS	*	*	*	1	*	*	*	*
	2037-3-SP	SPRING CAN, 10", SS	*	*	1	*	*	*	1	*
	2037-1-SP	SPRING CAN, 10", SS	*	*	*	*	1	*	*	*
	646-SP	SPRING CAN, 12", SS	*	*	*	*	*	1	*	*
	696-1-SP	SPRING CAN, 12", SS	*	*	*	*	*	*	*	1
2	1948-SP	DISC, 17" X 2.88"W., W/SLOT, SS	1	*	1	*	1	*	1	*
	1703-SP	DISC, 19-1/2" X 2.25"W., W/SLOT, SS	*	1	*	1	*	1	*	1
3	1947-SP	DISC, 17" X 2.88"W., SS	1	*	1	*	1	*	1	*
	1702-SP	DISC, 19-1/2" X 2.25"W., SS	*	1	*	1	*	1	*	1
4	1970-1-SP	BASE, SS, EN-REEL	1	*	1	*	1	*	1	*
	1743-3-SP	BASE, SS, 19" EN-REEL	*	1	*	1	*	1	*	1
5	1777-SS	NUT, FLEX-LOCK, 1/4-20, SS	3	3	3	3	3	3	3	3
6	3859-SS	NUT, LOCK/STOP, 1/4-20, SS	2	2	2	2	2	2	2	2
7	433-SS	SWIVEL, 3/8" NPT, CARBOXYLATED, SS	1	1	*	*	1	1	*	*
	434-SS	SWIVEL, 1/2" NPT, CARBOXYLATED, SS	*	*	1	1	*	*	1	1
11	1776-5	BEARING, HUB, 1" ID	1	1	1	1	1	1	1	1
12	1620-SS	BOLT, SHOULDER, 1/2" X 1-1/2", SS	1	1	1	1	1	1	1	1
13	640-1-SS	LOCKING DOG, F7 REEL, SS	1	1	1	1	1	1	1	1
14	274-1-SS	SPRING, TENSION, LOCKING DOG	1	1	1	1	1	1	1	1
15	1956-SS	AXLE, 1" OD, 1" SPRING CAN, SS	1	*	1	*	1	*	1	*
	1793-SS	AXLE, 1" OD, 1" SPRING CAN, SS	*	1	*	1	*	1	*	*
	1794-SS	AXLE, 1" OD, 1-1/2" SPRING CAN, SS	*	*	*	*	*	*	*	1
16	437-SS	WASHER, LOCK, 3/8"	*	1	*	1	*	1	*	1
17	435-SS	NUT, LOCK, 3/8-16, .437" W, SS NYLON ELEMENT	1	1	1	1	1	1	1	1
18	1953-SS	BOLT, CARRIAGE, 1/4-20 X 1-1/2", GR 5, SS	3	3	3	3	3	3	3	3
19	7050-SS	NUT, LOCK, SS, 10-32	2	*	2	*	2	*	2	*
	1777-SS	NUT, FLEX-LOCK, 1/4-20, SS	*	4	*	4	*	4	*	4
20	381-SS	CLAMP, HOSE, #10, SS	2	2	*	*	2	2	*	*
	382-SS	CLAMP, HOSE, #14, SS	*	*	2	2	*	*	2	2
22	245-SS	SCREW, 10-32 X 3/8, TRUSS/PHP, SS	6	6	6	6	6	6	6	6
23	1924-SS	LOCKING RING, SS, F7 REEL	1	1	1	1	1	1	1	1
24	438-SS	WASHER, LOCK, 5/8", SS	1	1	1	1	1	1	1	1
25	3584-SS	NUT, HEX, 5/8-11, SS	1	1	1	1	1	1	1	1
26	1967-SS	COVER, END, W/CUTOUT, SS, 17" EN REEL	1	*	1	*	1	*	1	*
	195-1-SS	COVER, END, W/CUTOUT, SS, 19" EN REEL	*	1	*	1	*	1	*	1
27	1966-2-SS	CENTER BAND, SS, 17" EN REEL	1	*	1	*	1	*	1	*
	529-1-SS	CENTER BAND, SS, 19" EN REEL	*	1	*	1	*	1	*	1
28	1968-SS	COVER, END, SS, 17" EN REEL	1	*	1	*	1	*	1	*
	196-1-SS	COVER, END, SS, 19" EN REEL	*	1	*	1	*	1	*	1
29	589-SS	SCREW, TRUSS HD, SS, 1/4-20 X 1-1/4	2	2	2	2	2	2	2	2
31	324-1-SS	ROLLER BRACKET, EN-REEL, SS	1	1	1	1	1	1	1	1
34	10235-SS	STUD, SS, 3/8-16 UNC-2A X 1	1	1	1	1	1	1	1	1
35	6440-SS	SPACER, WASHER, .286"W., SS	1	1	1	1	1	1	1	1
37	7050-SS	NUT, LOCK, SS, 10-32	6	6	6	6	6	6	6	6
40	1755-1	WASHER, SPACER, HDPE, BLACK	1	1	1	1	1	1	1	1
41	1753-SS	RETAINING RING, SS (5160-75H)	1	1	1	1	1	1	1	1
42	500-SS	ELBOW, STR, 90DEG, 3/8", SS	*	*	*	*	1	*	*	*
	1671-SS	ELBOW, STR, 90DEG, 1/2", SS	*	*	*	*	*	*	1	*
43	6441-1	SPACER, WASHER, .050"W.	1	1	1	1	1	1	1	1
*44	2209-1	KIT, CENTER BAND, W/ HOSE GUIDE	1	*	1	*	1	*	1	*
	2209-2	KIT, CENTER BAND, W/ HOSE GUIDE 19"	*	1	*	1	*	1	*	1
45	10925-5	NAMEPLATE, PRODUCT, STD DECAL	1	1	1	1	1	1	1	1
46	10220-75-SS	BOLT, CARRIAGE, 5/16-18 X 3/4", GR 5, SS	5	5	5	5	5	5	5	5
47	111-SS	NUT, LOCK, 5/16-18, SS	5	5	5	5	5	5	5	5

*NOTE: ITEM 44 BAND KIT IS FOR PARTS ORDERS ONLY

REEL ASSEMBLY REPORTS: R100 (LATCHOUT REMOVAL), R101 (LOCKING RING PLACEMENT), R112 (TIGHTENING AND TORQUE), R127 (CENTER BAND TIGHTEN)

REVISION: R

ECO: 1924-5 DATE: 7/7/03

NAME: J. KNOSALLA