

EXP-25.DWG

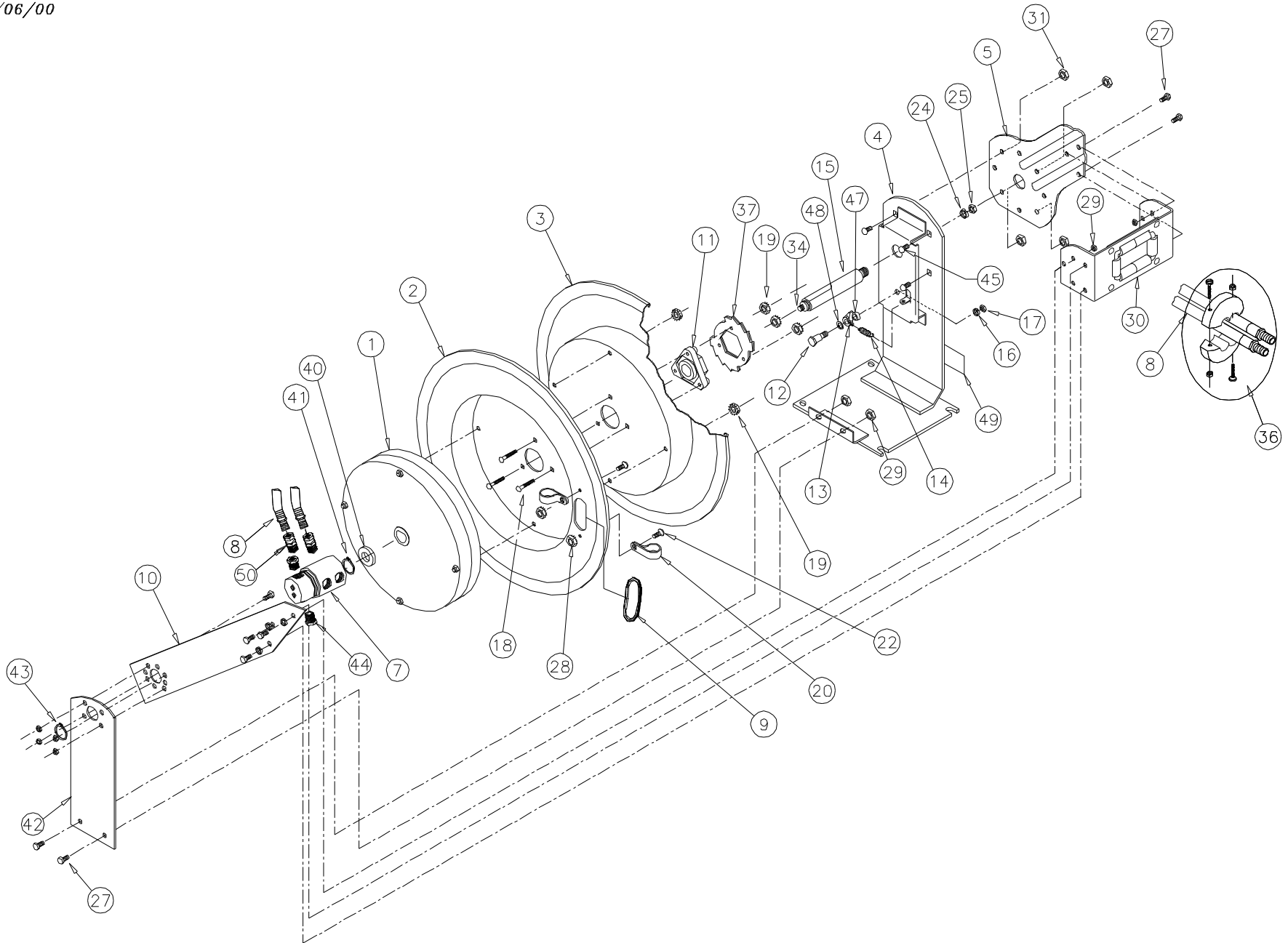
REVISION: A

ECO NO.: 1650-3

DRAWN BY: J. SAUDER

DATE: 10/06/00

COXREELS
SERIES TDMP



COMMON PARTS TO ALL TDMP-N AND TDMPL-N MODELS

ITEM NO.	PART NO.	DESCRIPTION	QTY REQ'D
11	1776-3	ASSY, HUB BEARING	1
12	1620	BOLT, SHOULDER, ½"x1½"	1
13	640-1-SS	CAM, LOCKING	1
14	274-1-SS	SPRING, DOG	1
16	437	WASHER, LOCK, 3/8"	1
17	184	NUT, JAM, 3/8-16	1
18	1953	BOLT, CARRIAGE, 1/4-20 x 1 1/2" LG. GR 5	3
19	125	NUT, KEPS, 1/4-20	7
22	245	BOLT, 10-32 x 3/8"	2
24	438	WASHER, LOCK, 5/8"	1
25	3584	NUT, 5/8-11	1

ITEM NO.	PART NO.	DESCRIPTION	QTY REQ'D
27	312	BOLT, 5/16-18 x 3/4"	12
28	130	NUT, KEPS, 10-32	2
29	111	NUT, LOCK, 5/16-18	12
31	111-1	NUT, LOCK, 5/16-18 (LOW PROFILE)	4
34	10235-SS	SETSCREW 3/8-16x7/8 CUP PT -SS	1
37	1924	LOCKING RING	1
40	1755-1	WASHER, SPACER	1
41	1753	RETAINING RING (5160-75)	1
45	10220-75	BOLT, CARRIAGE, 5/16"-18 x 3/4"	4
47	6440-SS	WASHER, SPACER	1
48	6441-1	WASHER, SPACER	1
49	10925-5	LABEL	1

ITEM NUMBER

MODEL NO.	1	2	3	4	5	7	8	9	10	15	20	30	36	42	43	44	50
	SPRING	DRUM	DRUM	BASE	ARM	SWIVEL	HOSE	GUARD	ARM	AXLE	CLAMP (2)	BRKT.	BALL STOP	SUPP.	R.RING	BUSHING(2)	ADAPTER(2)
TDMP-N-350	670	7238	7239	7524	1733	7516	5225-50	7242	7522	1794	384	7527	635	7521	7528	7540	815
TDMP-N-450	670	7238	7239	7524	1733	7516	5257-50	7242	7522	1794	397	7527	635	7521	7528	-	814
TDMPL-N-350	670	7238	7239	7524	1733	7516	-	7242	7522	1794	384	7527	-	7521	7528	7540	815
TDMPL-N-450	670	7238	7239	7524	1733	7516	-	7242	7522	1794	397	7527	-	7521	7528	-	814

REEL ASSEMBLY REPORTS:

- R100 LATCHOUT REMOVAL PROCEDURE
- R101 LOCKING RING PLACEMENT
- R112 TIGHTENING AND TORQUING

REVISION: A

ECO: 1650-3

DATE: 10/6/00

NAME: J. SAUDER